

VB SERIES

INTELLIGENT NETWORK CAMERAS



VB-M600VE



VB-M600D



VB-M700F

- 101.2° wide angle-of-view and 3x optical zoom
- 1.3 M high pixel count (1280 x 960)
- Minimum subject illumination: Day: 0.018 lux / Night 0.001 lux (monochrome)
- Shock resistance up to 50 J
- Dust and water resistant (IP66)
- Anti-condensation internal fan
- Optional heating unit for cold climates
- Discreet dome-shaped design

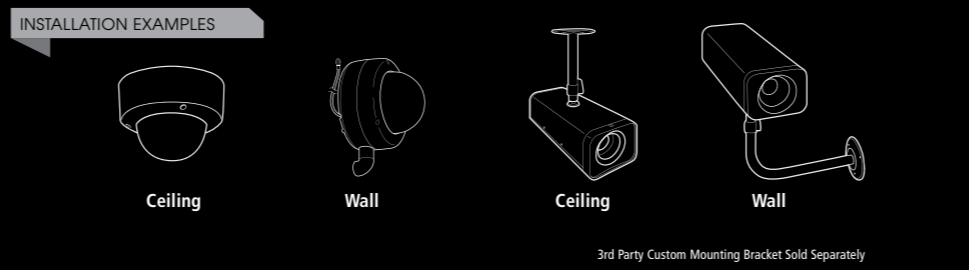
- 101.2° wide angle-of-view and 3x optical zoom
- 1.3 M high pixel count (1280 x 960)
- Minimum subject illumination: Day: 0.018 lux / Night 0.001 lux (monochrome)
- Discreet dome-shaped design

- 102.5° wide angle-of-view and 3x optical zoom
- 1.3 M high pixel count (1280 x 960)
- Minimum subject illumination: Day: 0.018 lux / Night 0.001 lux (monochrome)
- Outdoor housing compatible design

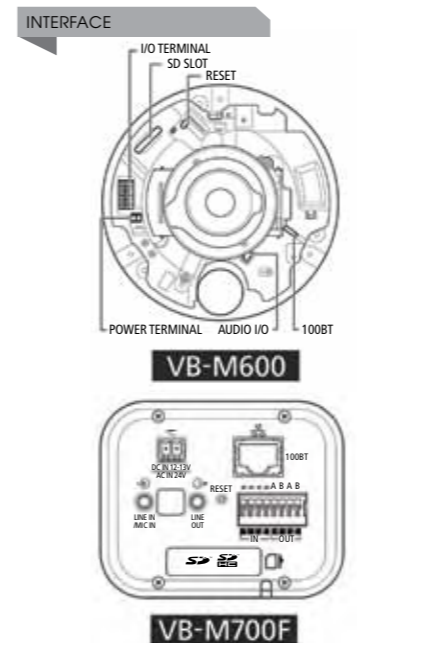


PRODUCT SPECIFICATIONS	VB-M600VE	VB-M600D	VB-M700F
Image Sensor	1/3 type CMOS (primary color filter)		
Number of Effective Pixels	Approx. 1.3 million pixels		
Scanning Method	Progressive		
Lens	3x Optical Zoom Lens (Electric Drive)		
Focal Length	f=2.8 (W) – 8.4mm (T)		
F-number	F1.2 (W) – F2.0 (T)		
Viewing Angle	Horizontal: 101.2° (W) – 33.7° (T) / Vertical: 74.7° (W) – 25.3° (T)		Horizontal: 102.5° (W) – 34.2° (T) / Vertical: 75.6° (W) – 25.6° (T)
Day / Night Switch	Auto or Manual (In "Auto" mode, it switches automatically according to "Switching Brightness" and "Response" settings)		
Min. Subject Illumination	Day Mode (color): 0.018 lux (F1.2, Shutter Speed 1/8 sec., when Smart Shade Control is on) Night Mode (monochrome): 0.001 lux (F1.2, Shutter Speed 1/8 sec., when Smart Shade Control is on)		
Focus	One-shot AF / Manual / Fixed at infinity		
Shooting Distance (from front of lens)	Day Mode : 0.3m (12in) → ∞ Night Mode : 1.0m (3.3ft) → ∞		
Shutter Speed	1, 1/2, 1/4, 1/8, 1/15, 1/30, 1/60, 1/100, 1/120, 1/250, 1/500, 1/1000, 1/2000, 1/4000, 1/8000 sec.		
Exposure	Auto / Flickerless / Shutter-Priority AE, Manual (Shutter Speed / Aperture / Gain)		
White Balance	Auto / Select Light Source (Warm Fluorescent, White Fluorescent, Daylight Fluorescent, Mercury Lamp, Sodium Lamp, Halogen Lamp) / Manual / Lock (One-shot WB) *Manual setting is available with RM-Lite or RM64 / 25 / 9 only		
Metering Mode	3 Options (Center-weighted / Average / Spot)		
Exposure Compensation	7 levels		
Smart Shade Control	7 Levels (Function for increasing the brightness of shaded subjects in an image with sharp contrast of brightness and darkness)		
Video Compression Method	H.264, JPEG		
Image Size	JPEG : 160 x 120, 320 x 240, 640 x 480, 1280 x 960 H.264 : 320 x 240, 640 x 480, 1280 x 960		
Image Quality	JPEG / H.264: 5 levels		
Frame Rate	JPEG: 30 – 0.1fps, H.264: 30 / 15 / 10fps		
Max. Frame Rate	Max. 30 fps (1280 x 960)**		
Simultaneous Client Access	JPEG: Max. 30 Clients + 1 Admin Client, H.264: Max. 10 Clients		
Audio Compression Method	G.711 μ-law (64 kbps)		
Audio Communication Method	Full-duplex (two-way) - Echo cancellation function compliant		
Audio Playback	Available**		
Protocol	IPv4 : TCP/IP, UDP, HTTP, FTP, SNMP (MIB2), SMTP (Client), DHCP (Client), DNS (Client), ARP, ICMP, POP3, NTP, SMTP authentication, WV-HTTP (from Canon), ONVIF IPv6 : TCP/IP, UDP, HTTP, FTP, SMTP (Client), DNS (Client), ICMPv6, POP3, NTP, SMTP authentication, WV-HTTP (from Canon), ONVIF		
On-Screen Display	Available		
Encrypted Communications	SSL / TLS, IPsec (Auto Key Exchange / Manual)		
Camera Control	3 User levels available (Administrator / Authorized user / Guest user) Up to 50 users' user names and passwords can be set for Authorized users		
Privacy Mask	Number of registration: Max. 8 places, Number of mask colors: 1 (select from 9 colors)		
Access Control	Access control (user name & password) / Host-based access control (IPv4, IPv6)		
Intelligent Function	<Image> Type of Detection: moving object detection, removed object detection, abandoned object detection, and camera tampering detection <Volume> Area of Detection: Max. 15 places Volume Detection		
Event Trigger Type	External Device Input I/2, Intelligent Function (Image), Intelligent Function (Volume), Timer		
Image Upload	FTP / HTTP / SMTP (e-mail) temporary storage memory in camera: Max. approx. 4MB, Frame Rate: Max. 10 fps		
Event Notification	HTTP / SMTP (e-mail)		
Language	English / French / German / Italian / Spanish / Japanese		
Network Terminal	LAN x 1 [RJ45, 100Base-TX (Auto / full-duplex / half-duplex)]		
Audio Input Terminal (common for LINE IN & MIC IN)	Φ3.5 mini-jack connector (monaural) LINE IN / MIC IN can be switched in the setting page LINE IN x 1 (connect to an amplifier microphone) or MIC IN x 1 (connect to a microphone without amplifier)		
Audio Output Terminal (LINE OUT)	Φ3.5 mini-jack connector (monaural) LINE OUT x 1 (connect to an amplifier speaker)		
External device I/O Terminal	Input x 2; Output x 2		
Memory Card	SD Memory Card, SDHC Memory Card Compatible. Max. approx. 32 GB, Frame Rate: Max. 11fps		
Operating Environment	Temperature : -10 – 50°C (14 – 122°F) Humidity : 5 – 85 % RH (without condensation) Temperature : -30 – 50°C (-22 – 122°F) Humidity : 5 – 85 % RH (without condensation)* *equipped with optional heating unit (HU600-VB)	Temperature : -10 – 50°C (14 – 122°F) Humidity : 5 – 85 % RH (without condensation)	
Power Supply	PoE : PoE power supply via LAN connector (IEEE802.3af compliant) AC adapter : optional PA-V17 (AC 100V - 240V) External power source : AC 24 V / DC 12V		
Dimensions	Φ180 x 147 (H) mm	Φ186 x 140 (H) mm	80 (W) x 192 (D) x 65 (H) mm
Impact Resistance	External materials : Aluminum Alloy, Dome: Polycarbonate plastics Lens shock absorbing mechanism Estimated shock resistant: 50 J (impact strength) *Based on Canon's test method	—	—
Dust-resistant / Waterproof Specification	IP66-rated		

**1: The frame rate may be reduced due to Viewer PC's specs, the number of clients accessing at the same time, network loads, type or movement of the subject, image quality setting or other reasons.
**2: A separately-sold amplifier speaker is necessary for playing audio files.



Information above is correct at time of publication, and is subject to changes. Please refer to the actual product brochure or www.canon-asia.com for updated specifications.



Canon
SOUTH & SOUTHEAST ASIA
REGIONAL HEADQUARTERS

CANON SINGAPORE PTE. LTD.
1 HarbourFront Avenue,
#04-01 Keppel Bay Tower, Singapore 098632

www.canon-asia.com

- Canon Offices**
- MALAYSIA**
Canon Marketing (Malaysia) Sdn. Bhd.
Tel : 60-3-78446000
Fax : 60-3-78450505
www.canon.com.my
 - THAILAND**
Canon Marketing (Thailand) Co. Ltd.
Tel : 66-2-3449999
Fax : 66-2-3449910
www.canon.com.th
 - SINGAPORE**
Canon Singapore Pte. Ltd.
Domestic Operations
Tel : 65-6799-8888
Fax : 65-6799-8882
www.canon.com.sg
 - VIETNAM**
Canon Marketing Vietnam Co. Ltd.
Ho Chi Minh, Vietnam
Tel : 84-8-38200-466
Fax : 84-8-38200-477
 - Hanoi**
Tel : 844-37711677
Fax : 844-37711678
www.canon.com.vn

- Canon Business Partners**
- BANGLADESH**
J.A.N. Associates
Tel : 880-2-8611444
Fax : 880-2-8610410
 - BRUNEI**
Interhouse Company
Tel : 673-2-653001
Fax : 673-2-653003
 - CAMBODIA**
i-Click (Cambodia) Pte. Ltd.
Tel : 855-23-996638
Fax : 855-23-996639
 - INDONESIA**
PT Datacrip
Canon Call Centre
Tel : 021-2922-6000
Fax : 62-21-6544811 to 13
www.canon.co.id
 - MALDIVES**
SIMDI Company Pvt. Ltd.
Tel : 960-324819
Fax : 960-318433
 - MYANMAR**
Myanmar Golden Rock International Co., Ltd.
Tel : 95-1-202092 to 96
Fax : 95-1-202079
 - NEPAL**
International Electronics Concern (P) Ltd.
Tel : 977-1-4421991
Fax : 977-1-4421909
 - PAKISTAN**
MBM
Tel : 92-21-32735322
Fax : 92-42-37530948
 - SRI LANKA**
Metropolitan Computers (Pvt) Ltd.
Tel : 94-011-2590572 / 2590582
Fax : 94-011-2590583

Dealer's Stamp

THE NEW STANDARD IN MONITORING SUPREMACY

INTELLIGENT NETWORK CAMERA



VB-M600D VB-M600VE VB-M700F



VISUAL PRECISION YOU CAN COUNT ON

Ultra Wide-Angle Lens with 3X Optical Zoom and Quick Focusing



A bright F1.2 lens with an ultra-wide 101.2° (VB-M600VE & VB-M600D) and 102.5° (VB-M700F) horizontal field of view to capture a generous portion of the frontal area. The 3X optical zoom also plays an integral part in magnifying small subjects while the Electronic Rear Focus System ensures that subjects being tracked by the camera continue to remain in focus while zooming in and out.

VB-M600 Electronic Adjusting Mechanism (During Installation Only)

ACTION	DETAIL	ADJUSTABLE RANGE
Pan	Adjusts left and right motion of the camera	-175° to +175°
Tilt	Adjusts up and down motion of the camera	-75° to +75°
Rotation	Adjusts direction of rotation of the image	-175° to +175°

Adjusting the field of view during installation is now easier with the electronic adjusting mechanism of the VB-M600VE and VB-M600D. Users are able to remotely pan, tilt, rotate and zoom until the desired field of view is achieved, using the default setting tool software.

FULL-FEATURED DETECTION CAPABILITIES

Through the process of complex algorithms, the latest 1.3 megapixel network cameras are able to offer an unprecedented level of detection, including the ability to detect abandoned or moving objects in a frame.



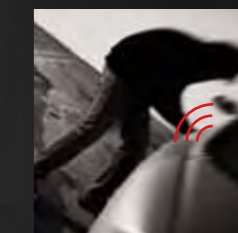
DETECTS ABANDONED OBJECTS



DETECTS MOVING OBJECTS



DETECTS TAMPERING OF CAMERA



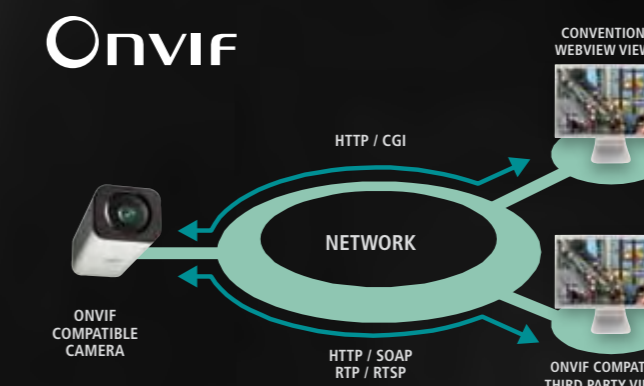
DETECTS AMBIENT SOUNDS



DETECTS REMOVED OBJECTS

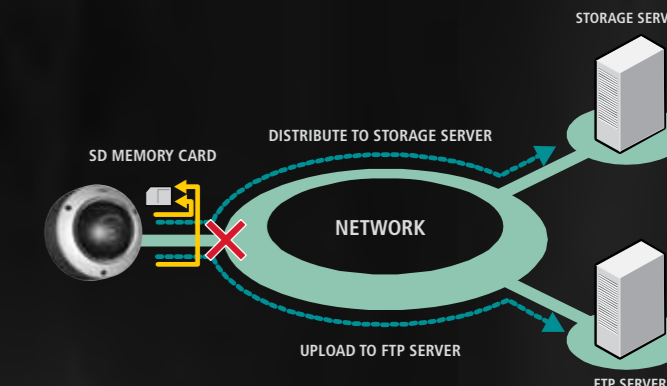
SEAMLESS INTEGRATION WITH EXISTING NETWORK

By fully supporting the Open Network Video Interface Forum (ONVIF) communication standard, other ONVIF-enabled hardware like storage servers and third party viewing software can instantly leverage on the cameras' functionality without having to deal with proprietary configuration settings.



SD MEMORY CARD SLOT CUSHIONS OPERATIONAL LAPSES

To counter any disruptions in data streaming, the network cameras adopt a built-in SD Memory Card slot that supports SDHC cards up to 32GB. This effectively allows operation logs and images to simultaneously be saved in the event of a breakdown in communication between camera and server.

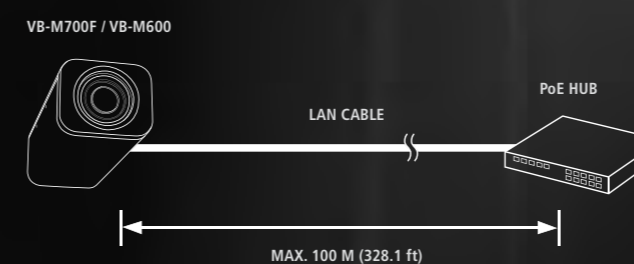


SAFEGUARD PRIVATE INFORMATION



Prevent invasion of privacy and sensitive information from falling into the wrong hands with the Privacy Mask function. By creating up to eight user-defined colored rectangles, any area in the camera's view can be digitally masked to further enhance security measures.

EASY INSTALLATION WITH PoE



Power over Ethernet (PoE) technology enables the network cameras to receive both data and power through a single LAN cable. Once the camera is connected to a PoE-enabled hub, no additional electrical installation work is required.

UNMATCHED IMAGE CAPTURE QUALITY

Exemplary Low Light Performance



With an intelligent Day/Night function that boosts the camera's sensitivity to light by up to 10 times, surveillance in dimly-lit environments poses no problems. In addition, a Smart Shade Control function also aids in brightening underexposed areas and boosting contrast levels.

High Quality Compression H.264



Using the versatile H.264 image compression format means that network transmission speeds are kept swift and smooth even when streaming full-frame 1280 x 960 pixel (1.3 megapixel) images at 30 frames per second.

KEEPS YOUR WORLD RUNNING SMOOTHLY

Canon's 1.3 megapixel network cameras, the VB-M600VE, VB-M600D and VB-M700F have their sights on becoming the most utilitarian surveillance solution in the market. Featuring a medley of cutting-edge technologies that promise vantage viewing round-the-clock, business owners can finally put their security concerns to rest.

From the ability to pan and tilt in sweeping arcs, to the precise optics, advanced detection technology, and user-friendly interface of the bundled software, the latest Canon network cameras will tackle your monitoring requirements, big or small.

INTUITIVE SOFTWARE INSPIRES EASY CONTROLS

The network cameras place a heavy emphasis on usability and this could not be better amplified than the hassle-free Admin Tools and bundled Recording Software. Admin Tools allow the camera's various settings to be controlled via any computer browser, so surveying from different terminals in the same LAN network is a breeze. The bundled recording software, RM-Lite, has been specially developed to allow recording from up to 4 cameras, making it ideal to monitor small environments without the need to purchase additional software.

